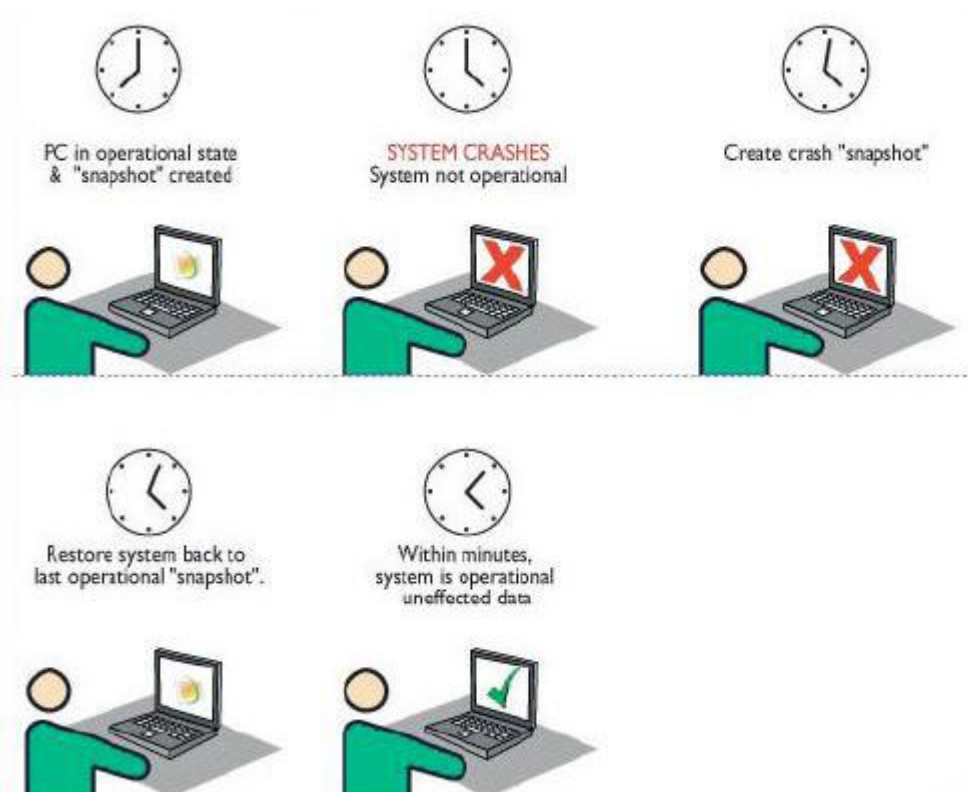


## MagiCure™ for Laptop Users

- **The Business Reality**

The nature of work today is changing. Knowledge workers are spending an increasing amount of time away from their corporate offices as a result of business travel or part-time telecommuting. A major challenge in satisfying the out-of-office IT needs of these professionals and executives is providing easy access to IT resources when the user requires it.

When users work remotely, system failures — whether due to user error, software induced crashes, or virus intrusion — can be catastrophic. With work hours often extending beyond the traditional 9-to-5 window, users frequently encounter these issues during “off hours.” In these situations, delivering effective support at a manageable cost is difficult, particularly when the user has lost network connectivity. Lack of network access makes remote troubleshooting almost impossible, resulting in a potentially devastating loss of productivity and critical data for the mobile professional.



**Within minutes, system is operational with unaffected data restored**



- **The MAGICURE Difference**

MAGICURE delivers a complete, and almost instantaneous, system recovery and configuration management solution for mobile professionals when they need it most: on the road. Requiring no network connectivity or intervention from IT support, MAGICURE enables complete restoration of a PC to a desired working state within the time it takes to reboot the PC — even with a failed operating system and/or a corrupted registry.

Data loss is also minimized, if not eliminated, because MAGICURE enables users to easily recover any data created between the time of the last system capture (called a MAGICURE *snapshot*) and the time the PC crashed. Prior to the rollback, users can capture the corrupted state to ensure that all files created since the last backup are preserved. This snapshot is then accessible in a virtual environment, and critical files can be restored to the existing working state by simply dragging and dropping to the desktop.

The ability to quickly restore a PC to a working-state within a single boot cycle — with minimal or no data loss and without network access requirements — is unmatched in the marketplace today.

- **KEY BENEFITS**

- Reduced downtime and productivity loss due to system failure, whether due to user error, software-induced system crash, or virus intrusion
- Minimal — if any — data loss due to system failure
- Expanded technical support capabilities for mobile and remote professionals, resulting in improved customer satisfaction
- Reduced IT support costs associated with mobile and remote professionals
- Ability to maintain and rapidly move between up to 1000 separate system configurations for different uses and/or locations



PACKAGE	CAPABILITIES
<p><b>Components</b></p> <ul style="list-style-type: none"><li>• MAGICURE Professional</li><li>• MAGICURE Remote Management Console</li></ul>	<p><b>Client</b></p> <ul style="list-style-type: none"><li>• Provides up to 60,000 selectable recovery points (MAGICURE snapshots)</li><li>• Delivers instantaneous access to multiple system configurations and saved PC states</li><li>• Rapidly mounts a virtual drive to facilitate data recovery in the event of a system failure or virus infection</li><li>• Locks and retains the “installation” configuration, thereby eliminating need for a gold disk</li><li>• Flexible scheduling capability: automatic, manual, or forced</li><li>• Operates in stand-alone mode or through a network via the MAGICURE Management Console</li></ul> <p><b>Management</b></p> <ul style="list-style-type: none"><li>• Remotely updates, restores and configures all network PCs with MAGICURE Standard or Professional clients</li><li>• Provides management access control</li><li>• Components run as services</li><li>• Delivers dynamic port configuration</li><li>• Includes separate management and server modules</li></ul>

## WANT TO KNOW MORE?

If you are looking for more information about MagiCure, you are welcome to visit our Web site and explore our Knowledge Base, forum, and white papers:

<http://www.magicuresoft.com> or <http://www.avant-s.com>

For any specific sales-related or technical support questions, please do not hesitate to contact us via e-mail:

[sales@magicuresoft.com](mailto:sales@magicuresoft.com)

[support@magicuresoft.com](mailto:support@magicuresoft.com)

Thank you for trusting MagiCure to protect your computer!