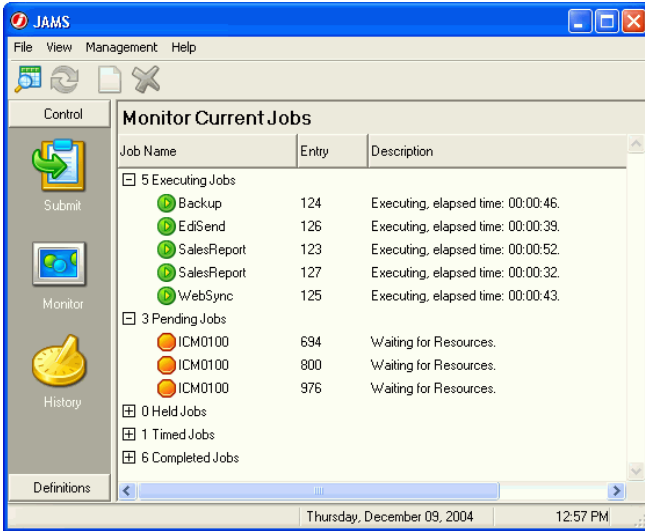




Batch Job Scheduling & Task Automation



JAMS tackles one of the greatest challenges facing businesses today - the ability to integrate complex business processes across multiple applications and platforms.

Many business processes require input from various departments and sources before the data can be analyzed, processed and eventually delivered as useful information. Any disruption or latency in the delivery of this data can cause great pain in the form of lost productivity and lost revenue.

JAMS is an easy-to use and extremely powerful Business Process Automation (BPA) solution that is suitable for any size organization. The reliability of **JAMS** is unprecedented, processing tens of millions of batch jobs for hundreds of companies each and every day.

It's no wonder that organizations like JPMorgan, Novelis, and the US Postal Service all rely on **JAMS** to automate their mission critical business processes.

Cross-Platform Scheduling

JAMS Scheduler can orchestrate the execution of processes across multiple platforms with ease. Cross-platform scheduling and job and file dependency triggers are easily resolved with **JAMS**.

.NET Framework = Easy Application Integration

As your Application Developers write more and more .NET applications, they need access to a solution that can provide back-end processing and automation. The JAMS .NET Class Library completely exposes JAMS to your applications, enabling easy integration without having to write additional code.

Resource Based Scheduling

Managing batch processes across the enterprise is complex. As you add more applications and servers, the complexity increases exponentially. **JAMS** adds another powerful tool to your arsenal, Resource Based Scheduling.

A Resource can be any component that impacts your ability to process information -- disk I/O, memory utilization, database lock contention, and network bandwidth to name a few. Once you've identified your Resources, you specify which Resources are required to run your processes and **JAMS** takes care of the rest!

PowerShell Support

JAMS includes a PowerShell Host for executing PowerShell scripts. The PowerShell Snap-in comes with more than 20 JAMS-specific cmdlets and a **JAMS** Provider to expose your **JAMS** objects to PowerShell.

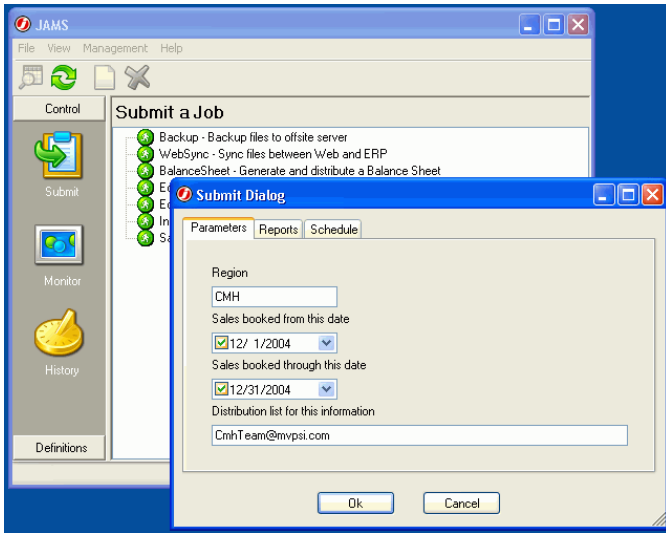
Date Specifications

Date specifications are easy! **JAMS** uses natural language date specifications, not complicated codes. **JAMS** understands any date specification you create:

- "WEEKDAYS"
- "FIRST DAY OF MONTH"
- "LAST DAY OF MONTH"
- "3RD WORKDAY OF PERIOD"
- "2ND TUESDAY OF NOVEMBER"

Workflow Foundation Support

JAMS provides reliable, enterprise support for hosting your Workflows. **JAMS** includes WF Activities which lets you integrate JAMS into your WF business processes.



Setups

Setups make it easy to define a stream of jobs that can then be managed as a single entity. The jobs in Setup can be running on any operating system.

JAMS takes care of all the details of sequencing and scheduling the individual jobs.

Security

JAMS is completely secure due to the detailed access control. For example, a user may be able to submit a job without being able to see the job definition. And, you don't have to be an administrator to use **JAMS**.

Parameters

JAMS has the best parameter handling in the business. Each process can have up to 255 parameters. When an operator or end user requests a job, **JAMS** will display "fill-in-the-blank" forms to obtain values for a job's parameters. **JAMS** also has many features that ensure the correct values are passed to scheduled jobs.

Dependencies

A **JAMS** process can have an unlimited number of associated job and file dependencies. A job can depend on the completion of another job, the completion of a remote job or it can depend upon the value of a **JAMS** Variable.

Job Execution History

JAMS tracks all processes that run across your systems. You can query this history immediately. It's updated as soon as processes complete.

Notifications

JAMS can alert you to any issues or problems that may arise. You can be notified when:

- Jobs fail
- Jobs complete successfully.
- Jobs take too long to complete
- Jobs stall
- Jobs run too quickly

Load Balancing

JAMS provides complete server load balancing. **JAMS** can off-load jobs to servers that are less busy thus enabling you to make the most efficient use of your resources.

Technical Support

It only makes sense that the World's *Best* Solutions are backed by world-class support. That's why 24-hour technical support is standard for **JAMS** customers. You may never need to call us at 2AM, but it's nice to know we're here if you need us.

Customers

JAMS is used by leading organizations in every industry. Customers include:

BC Lottery Corp	Boeing
Bowater	British Petroleum
CVS/Caremark	Disciple Data
Electrabel	Golden One Credit Union
JPMorgan	Kaiser Aluminum
Lighthouse1	NAIT
Newell Rubbermaid	Novelis
The Hartford	Union Bank of CA
Univ of Scranton	University Physician Assoc

For a FREE demo of JAMS, please visit www.mvpsi.com.