



Datasheet

Raxco Software Incorporated
6 Montgomery Village Ave
Gaithersburg, MD 20879
800.546.9728 and 301.527.0803

The fastest and most complete defrag solution for boosting PC and Laptop performance

PerfectDisk® 10 Professional combines speed, thoroughness, flexibility, control, automation and ease-of-use to help make your PCs and laptops as fast as possible. Global enterprises, small businesses, and home users benefit from faster computers through automated defragmenting with PerfectDisk 10 Professional.

Certification and verification – A trusted solution

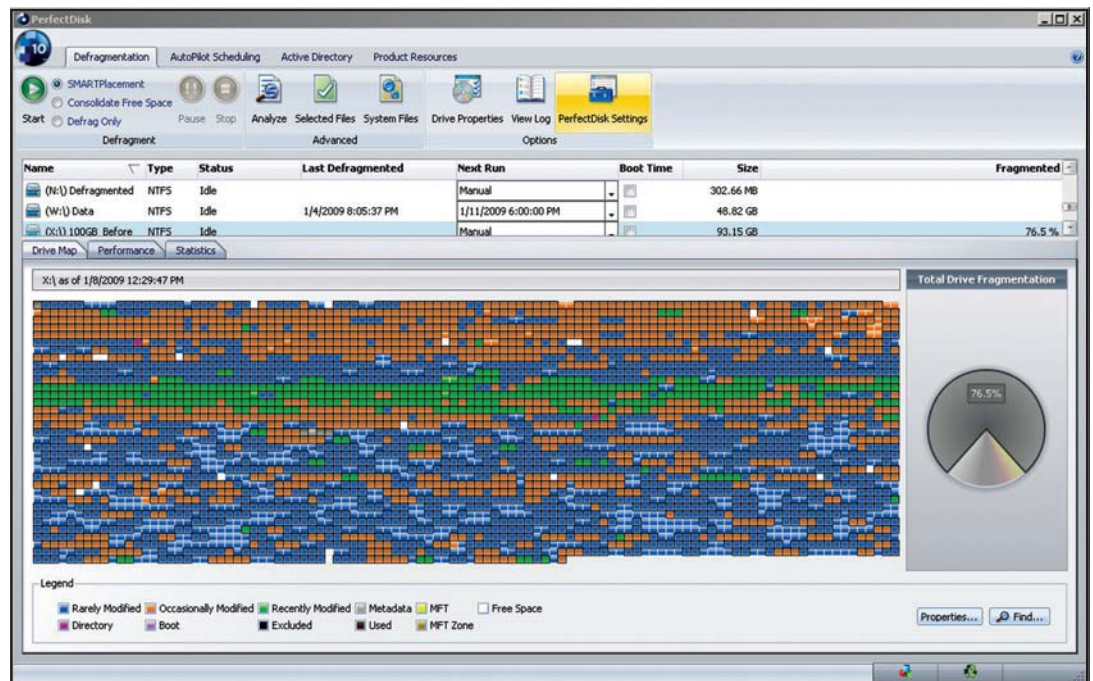
PerfectDisk 10 Professional is certified by Microsoft®, ensuring the highest standards of quality. As a Microsoft Gold Certified Partner and member of the Microsoft Developers Network, Raxco maintains a close partnership with Microsoft to ensure ongoing quality and compatibility.

Patented optimization technology

PerfectDisk’s patented SMARTPlacement™ optimization strategy places files on disk drives according to usage patterns. This greatly reduces the rate of fragmentation and ensures future defragmentation passes run faster and utilize fewer resources than typical disk defragmenters. And PerfectDisk’s exclusive Space Restoration Technology™ ensures drives have the largest amount of contiguous free space available. This helps boost write performance in addition to read performance. No other defragmenter leaves larger blocks of free space than PerfectDisk – and it does it in a single pass. Standard defragmenters do not consolidate free space effectively, resulting in poorly utilized storage, disks that will fragment more quickly, and poorer write performance.

Flexible Automatic Scheduling with unattended background defrag

PerfectDisk’s exclusive AutoPilot Scheduling™ lets you decide when and how you want your PC and laptop defragmentation done – set it up once and you never have to think about it again. You can set up ongoing schedules based on time and date, or leverage the intelligence of PerfectDisk to automatically defragment drives during computer idle time with StealthPatrol™ unattended background defragmentation if scheduling is not convenient. There’s also a Screen Saver mode for additional flexibility. It’s defragmentation on your terms.



The PerfectDisk 10 dashboard shows drive status, including fragmentation and free space levels, at a glance.

Standard multi-gigabyte and multi-terabyte drive support

PerfectDisk defragments the very largest disk drives that are prevalent in today's operating environments – drives that range from several hundred gigabytes to several terabytes. Support for RAID and Volume Sets enables powerful defragmentation for the largest and most complex environments with large storage arrays and volumes. Because of this design, PerfectDisk not only defragments these large drives completely, but it does so up to twice as fast as other defragmenters, consolidates the drives' free space, and uses 80% fewer resources - at no extra cost.

Total disk defragmentation and free space consolidation

PerfectDisk offers the most comprehensive solution for defragmentation by optimizing virtually every file on the system, including the Master File Table (MFT), all NTFS metadata files, paging files, directories, and data files, and completely consolidating free space. And it does it all in a single pass. There's also a File Defrag option that is useful for defragmenting very large files such as video files, rather than defragmenting the entire drive.

Minimal Free Space Requirement

Typical disk defragmenters can recommend having as much as 20% free space to defragment. PerfectDisk 10 requires only minimal free space – as little as 1% – in order to completely defragment the drive. This results in more efficiency and reduced storage costs for the critical defragmentation and optimization process.

CPU and I/O – Control over resource usage

PerfectDisk provides resource throttling capabilities to manage resource usage as efficiently as possible. I/O throttling allows PerfectDisk to run on very busy disks without imposing additional load on the disk. CPU throttling allows you to raise or lower the CPU priority at which it runs. PerfectDisk uses very minimal CPU resources in its standard processing.

Master File Table Placement for better computer performance

Only PerfectDisk 10 optimally places the Master File Table (MFT) as recommended by Microsoft for improved performance. This can mean as much as a ten percent performance and productivity improvement.

Additional Functionality for Power Users

PerfectDisk 10 Professional provides capabilities beyond defragmentation for your storage management needs. Users can easily detect and delete duplicate files as well as see a bird's eye view of their drives with the Space Management feature, including reports on disk space usage. PerfectDisk is also completely integrated with Active Directory®.

PerfectDisk...A Proven Leader in System Resource Management Solutions

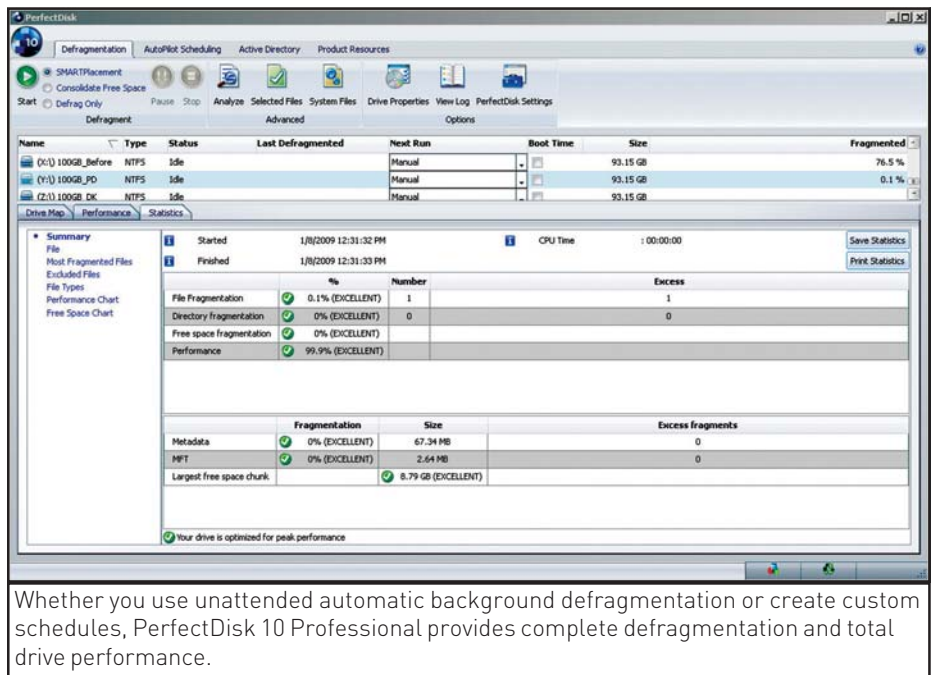
PerfectDisk empowers system managers, small business and home users by delivering flexibility, automation, and high-performance to help you thrive in constantly changing system network and home environments. PerfectDisk solutions extend the reach, power and versatility of your information systems for the most complex and demanding computer systems.

Minimum System Requirements

Operating System – Windows 7, Windows Vista, Windows XP Home/Professional, Windows 2000 Professional

Memory – 64MB (128MB recommended)

File System – NTFS, exFAT, FAT16, or FAT32



The screenshot displays the PerfectDisk 10 Professional interface. At the top, there are tabs for 'Defragmentation', 'AutoPilot Scheduling', 'Active Directory', and 'Product Resources'. Below these are icons for SMARTPlacement, Consolidate Free Space, Defrag Only, Pause, Stop, Analyze, Selected Files, System Files, Drive Properties, View Log, and PerfectDisk Settings. The main window is divided into several sections:

- Drive Map:** A table listing drives with columns for Name, Type, Status, Last Defragmented, Next Run, Boot Time, Size, and Fragmented. It shows three drives: (C:) 100GB Before (NTFS, Idle, Manual, 93.15 GB, 76.5%), (Y:) 100GB JD (NTFS, Idle, Manual, 93.15 GB, 0.1%), and (Z:) 100GB DK (NTFS, Idle, Manual, 93.15 GB, 0.1%).
- Performance:** A summary table showing defragmentation results. It includes a 'Summary' section with 'Started' and 'Finished' times, and a 'CPU Time' of 00:00:00. Below this is a table with columns for 'File Fragmentation', 'Directory Fragmentation', 'Free space fragmentation', and 'Performance', each with a percentage and a status (e.g., '0.1% (EXCELLENT)').
- Fragmentation and Size:** A table showing 'Fragmentation' and 'Size' for 'Metadata', 'MFT', and 'Largest free space chunk'. It also includes an 'Excess fragments' column.

At the bottom of the window, a green checkmark indicates 'Your drive is optimized for peak performance.'

Whether you use unattended automatic background defragmentation or create custom schedules, PerfectDisk 10 Professional provides complete defragmentation and total drive performance.